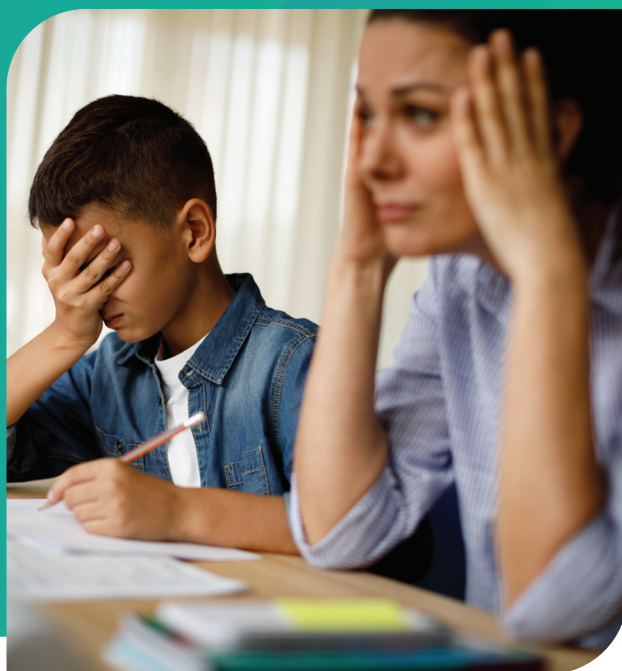


TWO LIVE ONLINE EVENTS

The Power of Relationships: Buffering the Impact of Stress and Trauma

Supporting Special Needs Families Through Periods of Stress and Trauma



On Tuesday, October 27, and Wednesday, October 28, from 5 – 6:30 p.m. Broward County Public Schools (BCPS) Exceptional Special Education Learning Support Services in partnership with the Neurosequential Model Network, LLC. will offer two LIVE online events on Microsoft Teams with Bruce D. Perry, M.D., Ph.D. for BCPS families and staff. For more information on both events, see the following:



Tuesday, October 27, 5 – 6:30 p.m.

The Power of Relationships: Buffering the impact of stress and trauma

(applicable to families, teachers and staff of all students)

<https://bit.ly/3m4wbwz>



Wednesday, October 28, 5 – 6:30 p.m.

Supporting Special-Needs Families through periods of stress and trauma

(applicable to families, teachers and staff of exceptional special education students)

<https://bit.ly/2T71Anf>



Bruce D. Perry, M.D., Ph.D. is Principal of the Neurosequential Model Network, LLC and Senior Fellow of The ChildTrauma Academy, a Community of Practice based in Houston, TX. He is also Professor (Adjunct) in the Departments of Psychiatry and Behavioral Sciences at the Feinberg School of Medicine at Northwestern University in Chicago and the School of Allied Health, College of Science, Health and Engineering, La Trobe University, Melbourne, Victoria, Australia. Dr. Perry is the author of over 500 journal articles, book chapters and scientific proceedings. His clinical research over the last 10 years is focused on integrating emerging principles of developmental neuroscience into clinical practice. This work has resulted in the development of innovative clinical practices and programs working with maltreated and traumatized children, most prominently the Neurosequential Model®, a developmentally sensitive, neurobiology-informed approach to clinical work, education and caregiving.